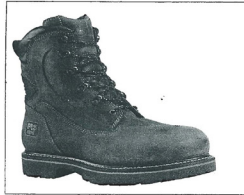
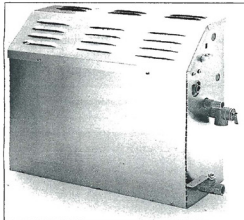


## PRODUCTS



▲ **THE THERMAL FORCE WORK BOOT** features an innovative heat retention system designed for those who work in cold environments. In the steel toe version of the boot, the toe cap area is coated with a ceramic-based material, then in both steel and non-steel versions additional lightweight, space-saving Aerogel insulation is added. The body of the boot uses Thinsulate Zone insulation, and the sole is composed of the company's proprietary Ice Trax rubber.  
**Timberland**  
**CIRCLE 124 ON INQUIRY CARD**



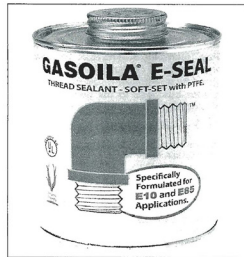
▲ **THIS STEAM GENERATOR** is designed for performance and reliability. It is easily installed in closets, vanities, basements or heated attics. It is available with digital, in-shower time and temperature controls. A special steam head allows for the quiet introduction of steam to the shower environment.  
**Mr. Steam**  
**CIRCLE 125 ON INQUIRY CARD**



▲ **THIS INDUSTRIAL HOSE REEL** is available in both spring-driven and hand-crank models. Its heavy-grade metal components are rust-resistant and long-lasting. Features include powder coating and an adjustable guide arm.  
**T&S Brass and Bronze Works**  
**CIRCLE 126 ON INQUIRY CARD**

▼ **NEW E10- AND E85-COMPATIBLE THREAD SEALANT** with PTFE is designed specifically for ethanol-blended gasoline applications. Ideal for petroleum, industrial and other markets, the non-toxic sealant provides a positive seal on pipe threads, joints, fittings and hoses.

**Gasoila**  
**CIRCLE 127 ON INQUIRY CARD**



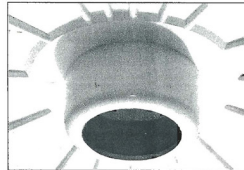
▼ **A NEW LINE OF RAIN CANOPIES** are available in round, square, oval and rectangular models in a range of sizes from 12" to 20". Precision engineered, the canopies are suitable for both private and commercial spas, without any special plumbing requirements. The line is offered in 16 different finishes.

**Jacko**  
**CIRCLE 128 ON INQUIRY CARD**



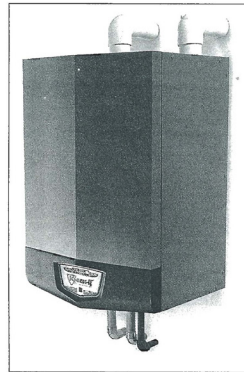
▼ **FIT-FLO MOLDED IN DRAINS** are now offered with all of the company's shower floors. It is an easy, economical solution with less chance of leaks. The drains reduce installation time and also works with no-hub, cast-iron and PVC pipe connections. A separate gasket will be offered for copper pipe connections.

**Swanstone**  
**CIRCLE 129 ON INQUIRY CARD**



▲ **THE INFINITY FRENCH DOOR-STYLE SHOWER DOORS** have no jamb at the center and a very low threshold for maximum accessibility. The 3/4" glass frameless doors feature two through-the-glass handles with an optional C-pull towel bar combination. Each door includes a continuous hinge system for added stability. They are offered in three heights, 68.5", 72" and 76" to fit a maximum width of 72".

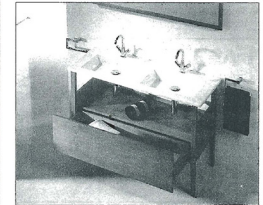
**Basco**  
**CIRCLE 130 ON INQUIRY CARD**



▲ **THIS WALL-MOUNT VERSION OF THE KNIGHT HEATING BOILER** delivers flexible installation with space-saving efficiency. The boiler is fully modulated with an Energy Star rating for government tax credit. It delivers a 93% AFUE rating. Its sealed-combustion design can be vented up to 100' using 3" PVC or CPVC pipe.  
**Lochinvar**  
**CIRCLE 131 ON INQUIRY CARD**

▼ **THE CITY COLLECTION OF VANITIES** are now available with a smart walnut finish. The space-saving vanity, designed with comfortable urban living in mind, is also offered in white or wenge. Features include contemporary lines, sleek stainless steel legs and cut-out handles. It pairs well with the company's basins and countertops.

**Sonia**  
**CIRCLE 132 ON INQUIRY CARD**



▼ **MEGALOC MULTI-PURPOSE THREAD SEALANT** is now manufactured with DuPont Kevlar for added strength. Grit-free and easy to apply, it makes leak-free threaded joins on metal and plastic pipe and fittings. No waiting time is needed after application, just tighten and test. It never hardens, cracks or becomes brittle.

**Hercules**  
**CIRCLE 133 ON INQUIRY CARD**



▼ **THE KINETIK LUXURY SHOWER DOOR** slides on two sets of silent rollers that glide easily over a stainless steel bar without flexing or friction. It is made from a single panel of glass for a minimalist appearance.

**Fleurco**  
**CIRCLE 134 ON INQUIRY CARD**

